

No-Sew Fleece –“slip fringe through slit” Blanket Instructions

Project  **Linus**
Providing Security Through Blankets

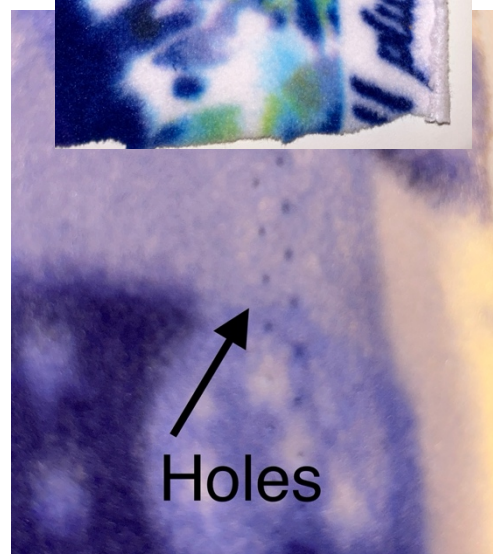
Columbus Area, OH Chapter
Serving Delaware & Franklin Counties

You will need...

...1&1/2 to 2 yards of a single layer
“blizzard” or “anti-pill” fleece.
(please do not use “make-it and give it kits”—fabric too thin)

...Sharp fabric scissors, masking tape,
pen or marker, ruler

Step 1: Using sharp scissors, remove both selvage edges along the length of the fleece.
The selvege edge sometimes has words printed on it.
Salvege edges may seem “hidden” and not obvious.
Look for small holes the length of the fabric.
The trimmed edge should be straight and smooth.

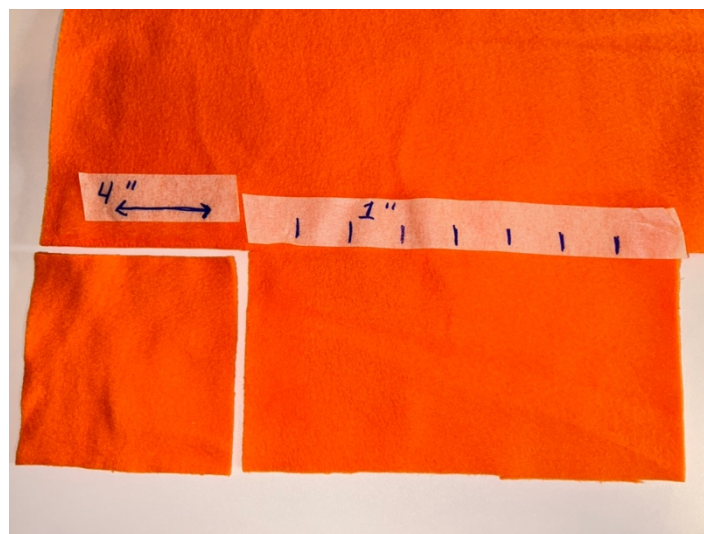


(Fabric rolls, does not look nice if the selvage is left on)

Step 2: Cut a 4 inch square out of each corner of the fleece. This allows the blanket to lay flat.

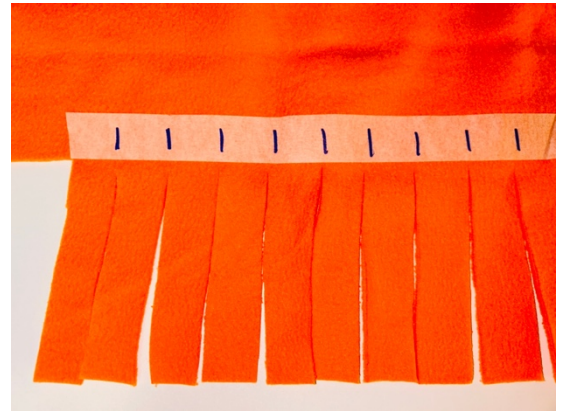
Step 3: With the fabric laying flat on a table, place masking tape from one side to the other, 4 inches up from the bottom edge of the fabric. Use the 4” corner cut outs as a guide.

Step 4: Using a ruler as a guide, mark lines every inch along the masking tape with a pen or pencil.
****Do not mark directly on the fabric.**



Step 5: Starting from one side, cut a straight line up to the tape at each mark. The fringe will measure 1" wide by 4" long. After cutting the first side, pick up the tape, and place it on the next side. Continue cutting the fringe on all other sides of the blanket.

Fringe lengths and widths should be the same on all sides of the blanket.



Step 6: fold the fringe up to the edge of the blanket

Step 7: snip a TINY slit in the fringe at the fold.



Step 7: From the underside of the blanket, push the fringe into the slit and gently pull through.

Using a small crochet hook, or the end of a pencil might help push the fringe corner into the slit to start pulling it through.

